

## A PARISH IS A FAMILY

A parish does not exist just on a Sunday morning.

A parish is a family called to pray, act, and socialise throughout the weeks, months, and seasons that give shape to the year.



Just like any family, we are not perfect, and we would like you to know that all are welcome, no one is excluded, and everyone is cherished.

GOD BLESS YOU!

## Parish Worship

Sunday Mass is celebrated at 9.00am and 11.00am at

Our Lady Immaculate Church, Seamoor Road,

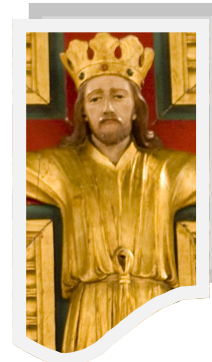
Westbourne. BH4 9AE

At 9.00am there is a

Children's Liturgy.

At 11.00am we have full musical accompaniment with choir and organ.

Please see our weekly newsletter available at Mass and posted on our notice board and website for details of other Masses and services.



## Celebrating Life

For information about Baptism, Confirmation, First Holy Communion, Marriage, funerals, house blessings, Catholic schools, etc., please contact us using the information below.

## For Hall Information

Please call 01202 760640 or email:

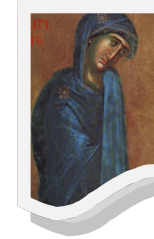
[oliadmin@portsmouthdiocese.org.uk](mailto:oliadmin@portsmouthdiocese.org.uk)

*RC Diocese of Portsmouth  
OUR LADY IMMACULATE PARISH, WESTBOURNE  
Registered charity 246871*

Our Lady Immaculate  
Parish Church and Hall,  
Seamoor Road,  
Bournemouth.  
BH4 9AE

Parish Priest  
The Presbytery,  
32 Alum Chine Road,  
Bournemouth.  
BH4 8DX

tel. 01202 764 027  
email: [westbourne@portsmouthdiocese.org.uk](mailto:westbourne@portsmouthdiocese.org.uk)  
(for hall information please see above)  
website: [catholicwestbourne.org](http://catholicwestbourne.org)  
First published 2014



*RC Diocese of Portsmouth  
OUR LADY IMMACULATE  
PARISH, WESTBOURNE  
Registered charity 246871*

*Welcome to  
Our Parish*



**H**ail Mary, full of grace,  
The **LORD** is with you.  
Blessed are you among women  
and blessed is the fruit of your  
womb, **JESUS**. (Luke 1:26.42)

## *Our Parish Family*

Our parish is part of the Roman Catholic Diocese of Portsmouth. We grew out of the Jesuit mission based at Sacred Heart Church, Richmond Hill. Today, we worship in the Church of Our Lady Immaculate, Seamoor Road, after acquiring the building in 1928.

Our parish prides itself on being an inclusive family where as many members as possible take part in planning, running, and guiding all we do.

Here are some of the ways in which individuals contribute to parish life:

### **Parish Pastoral Council**

The Council assists and advises our priest in caring for each parishioner and guiding the parish as a whole. The Council meets regularly, and anyone is most welcome to raise issues at anytime with any Council member.

### **Liturgy, Formation and Spirituality Team**

Worship (Liturgy), sharing and growing in Faith (Formation), and nurturing the soul (Spirituality) are central to parish life. The Liturgy, Formation and Spirituality team co-ordinates all aspects of these vital areas.

This includes preparing people to receive the Sacraments, children's liturgy, sacristy, ecumenical links, CAFOD, music, prayer and retreats, discussion groups, support for married couples, Ministers of Communion, and Readers.

### **Finance and Property Committee**

This committee ensures the proper running of our finances and properties. As a registered charity, the parish is fully committed to accountable stewardship, to the health and safety of all who use our church and hall, and adherence to relevant laws of Church and State.

### **Hall and Social Committee**

We arrange social and cultural activities to ensure that our parish hall is used both for the benefit of our parishioners and the wider community. Our hall is also available for hire (please refer to separate leaflet).

### **St Vincent De Paul Society**

The SVP aims to see to the material and social needs of individuals and communities at a local and international level. Members visit the elderly and those in hospitals or residential homes. They arrange afternoon teas and other activities to help alleviate the loneliness and isolation felt by many around us.

Their international links offer solidarity with those who are poor throughout the world.

### **CAFOD**

The *Catholic Agency for Overseas Development* is the official overseas development and relief arm of the Catholic Church in England and Wales. Our local group is one of many raising awareness of the needs of those who lack the basic necessities of life around the globe. CAFOD is a first responder to famine, drought and disaster worldwide.

### **Working with others**

We do not consider ourselves a closed unit. We enjoy good relationships with our neighbouring Roman Catholic parishes and local Anglican church, St. Ambrose. We value being part of the wider community. We especially enjoy our friendly relations with *Hannah House*, our local addiction residential unit. We also actively support Catholic schools throughout Bournemouth.

### **Safeguarding**

Please be assured that we take the safeguarding of children and vulnerable adults very seriously and adhere to diocesan guidelines at all times.

### **We would like to hear from you**

Please take a moment to complete the slip inside this leaflet.

Once again, WELCOME!